

## ■ INSTALLATION

This product is suitable for installation within a standard 86mm or Europe 60mm pattress box.



For installing or removing the faceplate, please be careful that only pushes corners. Do not push the side middle, it may damage this product. Look at the picture, green arrow shows that where must be pushed out for removal or push in for install.

## ■ SERVICE

Your Thermostatic keypad switch carries a 24-month warranty from the date of purchase.

## | About smart **APEX** Company

Founded in 2013, smart APEX company is a developer and manufacturer of home automation components with extensive experience. At smart APEX Company, we always strive for innovation and quality. Under the APEX brand name, the smart APEX company offers a variety of smart system products, including panelize modules, smart light switches, smart dimmers and thermostatic light switch equipped with Z-Wave, ZigBee, CAN-BUS, and TCP/IP protocols. Open communication protocol and available software drivers enable APEX components to be integrated with the best-known platforms.



Calle Núñez Morgado, 4, Bajo Izq., Puerta  
93, 28036 Madrid España

## Contact Us

### Phone

+34 910 601 539

### Email

info@smartapex.es

### Web

www.smartapex.es



+34 910 601 539

Call For Info

**APEX**  
HOME AUTOMATION



# SMART KEYPAD SWITCH



## PRODUCT INTRODUCTION

APEX smart keypad switch is an intelligent device that can be remotely controlled through the Z-Wave network and radio waves. In the Z-Wave network communications, this product can be connected to any Z-Wave gateway. When using radio waves, this product can be used in conjunction with the Z-Wave gateway. The frequency of radio waves used by the gateway. Long presses for each button can be made a separated scene.

## SPECIFICATIONS

Model number	APX-MZWKP-4C
Power requirement	100 to 240VAC
Power consumption	<1W
Wireless frequency	868.4MHz EU (optional)
Protocol	Z-Wave / CAN-BUS (Optional)
Operational temperature	-10 to +70°C
Humidity	5% to 90% non-condensing
Weight	0.2 kg
Material	Aluminum
Face plate dimension	86x86mm

## ADD LIGHT SWITCH TO Z-WAVE NETWORK

1. Connect the switch to a power source, after making it powered, please do not operate it within lights blinking.
2. Make sure lights are fixed
3. Touch and hold the top left button for 4 seconds, blue led indicators will be blinking (note that gateway must be in identify mode). When identifying mode starts, blinking goes green and waits to complete joining.
4. When joining is completed, all led lights will be fixed, and the top and button red led goes off.

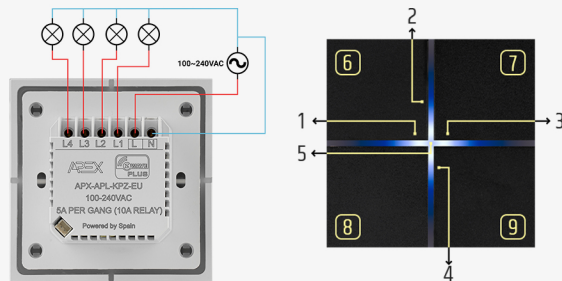
## REMOVE LIGHT SWITCH FROM Z-WAVE NETWORK

1. Make sure the Light Switch is powered.
2. Set Z-Wave gateway into exclusion mode (Refer to gateway user manual)
3. Touch and hold the top left button for 12 seconds, red led lights will be blinking. If the gateway is in exclusion mode, the device will be removed from the network.

## RESET TO FACTORY SETTING

Touch and hold the top left button for 12 seconds, red led lights will be blinking then release the button and press and hold for one more time 12 seconds. Led lights blinking multi-color, the central led will be red and it means the device restarted to factory setting.

## WIRING DIAGRAM QUICK REFERENCE



1	Button 4 LED status
2	Button 1 LED status
3	Button 2 LED status
4	Button 3 LED status
5	System status
6	Button 1
7	Button 2
8	Button 3
9	Button 4

Buttons	Description
Button 1	Short press: ON/OFF relay L1 Long press: make one scenario <b>WORK AS JOIN AND DISJOIN FROM THE NETWORK BUTTON</b>
Button 2	Short press: ON/OFF relay L2 Long press: make one scenario
Button 3	Short press: ON/OFF relay L3 Long press: make one scenario
Button 4	Short press: ON/OFF relay L1 Long press: make one scenario <b>LONG PRESS FOR 12SEC</b> : disable or enable <b>CHILD LOCK</b>

## FUNCTION PARAMETERS

Go to the device configuration and then advance section on your gateway then click on add parameter as below:

#	Desired value	Description	Data type
0	0: OFF, 1: ON, 2: Last state	Relay state when powering on	Unsigned int
1	Off = 0, Red = 1, Green = 2, Yellow = 3, Blue = 4, Purple = 5, Cyan = 6, White = 7	OFF state indicator LED color	Unsigned int
2	Off = 0, Red = 1, Green = 2, Yellow = 3, Blue = 4, Purple = 5, Cyan = 6, White = 7	ON state indicator LED color	Unsigned int
3	0~49	Standby brightness	Unsigned int
4	51~100	Working brightness	Unsigned int
5	0 ~10	Buzzer sound level	Unsigned int
6	0: OFF, 1: ON	Cleaning mode	Unsigned int
7	0=disable, 1=CH1&Ch2, 2=CH3&Ch4, 3=CH1&Ch2 and CH3&Ch4	Blind mode	Unsigned int
8	1~120 Second	Blind timer	Unsigned int
9	0=Cancel report status to home center, 1=Normal working	Report status	Unsigned int

After changing any value, press the save button.